



NATION CARE
Your Total Care Provider



Top SIL Provider in Melbourne



1300 970 018

www.nationcare.com.au/sil-accommodation-melbourne



Exceptional Disability Support Services

Founded with a passion for making a positive difference in the lives of people with disabilities, Nation Care is committed to delivering compassionate, person-centred care that empowers individuals to live their best lives.



At Nation Care, our mission is simple: to enhance the quality of life and promote the independence and well-being of individuals with disabilities.



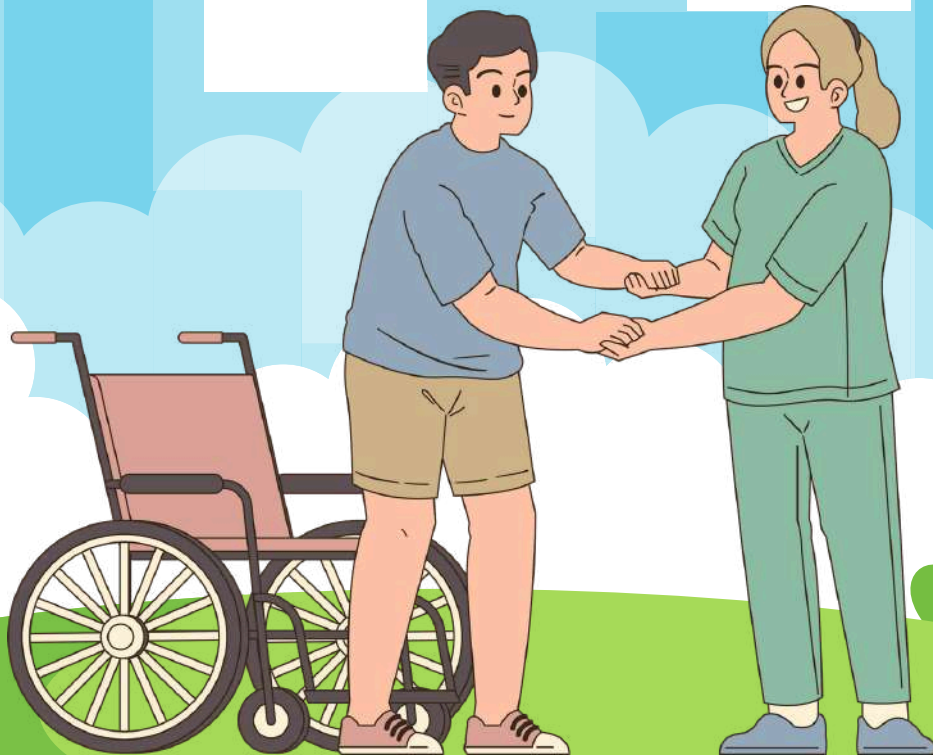


Contact Us

For professional advice and management support



1300 970 018



info@nationcare.com.au

Suite 2/75 Ashley St, Braybrook VIC 3019